



Additional Information

36th St Maarten Heineken Regatta

March 3-6 2016

Powered by



CONTENTS	
RESULTS	1
COMMITTEE AND PROTEST DESKS	1
CSA RATING RULE	1
IDENTIFICATION NUMBERS	1
COURSES	1
SOL WATERTAXI SERVICE	2
ANCHOR ZONES IN SIMPSON BAY	3
MARINE / CHANDLERY / REPAIR SERVICES DURING REGATTA	3
TAXI AND BUS	3
REGATTA GEAR	4
SEA RESCUE, FIRST AID AND COASTGUARD	4
LA RÉSERVE NATURELLE SAINT-MARTIN	4
ST. MAARTEN NATURE FOUNDATION	5
CLEAN REGATTA	5
SINT MAARTEN YACHT CLUB	6
SERIOUS FUN BRIDGE SHOW	6
HEINEKEN FUN PRIZE	6
SERIOUS, SAFE, FUN!	6
DEBRIEF	6
EVENT PROGRAM	8
BRIDGE OPENING TIMES	8

RESULTS

Results will be posted online at www.heinekenregatta.com with a link to <https://regattaguru.com/heineken> and on the Results Screens at the Sint Maarten Yacht Club. Please note that online results are accurate at the time they are viewed. In the event the screens are not working, we will post printed result. Printed results and the status of any Protests are accurate at the time they were printed. The date and time is shown on each printed sheet.

COMMITTEE AND PROTEST DESKS

The Committee and Protest Desks will be located at the Sint Maarten Yacht Club, in the container.

CSA RATING RULE

It is your responsibility, before the end of registration, to ensure that your CSA rating shown on the scratch sheets is for the sail configuration that you will use while racing. All information related to the CSA can be found on the website www.caribbean-sailing.com and you can download the rating rule and check ratings there.

IDENTIFICATION NUMBERS

Identification numbers will be available at Registration for yachts that do not have sail numbers. Only boats without sail numbers are required to have identification numbers. It is the

obligation of the participant to ensure that they are visible especially during the start and finish.

The identification numbers will be “tie-on” guardrail banners. Please be aware that a deposit of U\$100 or €100 cash is required for the numbers. This deposit will be fully refunded on the return of the **full set** of bow and stern numbers on Sunday or Monday at the Sint Maarten Yacht Club. Please consider donating the deposit to Sea Rescue.



How to attach a bow/stern number

Position the number between the pulpit and the first stanchion post and the push pit and last stanchion post. Stretch out the bottom and attach it to the toe rail. Tie the top aft corner to the top of the stanchion post and the forward corner to the top of the pulpit. Please make sure that the number is stretched tight and that the lines are not able to slip and fold the number together.

COURSES

For 2016 there is a new way of notifying the competitors of the Order of Starts and the Courses to be sailed by each class. The Order of Starts for the

first race on each Committee Boat will be posted by 1800 on the day before each day of racing on the Official Notice Board, and each entrant will receive the notice by email. In addition, anyone can sign up to receive notifications whether a competitor or not - go to regattaguru.com/heineken/100131 to create an account then visit the regatta page and set up the kind of notifications you want to receive. Prior to the warning signal for your race, the course and finish line will be announced by VHF and displayed via boards on your Committee Boat using the symbols in Appendix A that you were given at Registration or available to download from regattaguru.com/heineken/100131. Some courses will be described by the Race Committee by listing a series of mark symbols (mark symbols are all two-digit numbers) in order. A red symbol means round that mark to port and a green one means round it to Starboard. For example, if you see this on the stern of your Committee Boat:



your course will be “mark 22 to port, mark 23 to port”. The ‘Star H’ symbol at the end means to finish on the Heineken Finish (which always includes sailing through the Heineken Gate toward the Heineken Finish line before finishing). No matter how a course is displayed, the last symbol will always show where to finish.

SOL WATERTAXI SERVICE

The Sint Maarten Yacht Club is pleased to offer you a service that will shuttle you between your boat and the dock before and after the races. With our team of over 40 volunteers all our efforts are focused on offering you a reliable service and to reduce waiting time to a bare minimum, but we cannot achieve this without your cooperation! Always follow the instructions of the dock masters and dinghy crew! Simpson Bay is divided into three zones - see anchor maps below. For each zone we have dinghies that can take crew from several boats at a time. During the rush hours several smaller dinghies will also assist. When you return to your boat from the shore please be sure that you board the water taxi that operates in your zone. Our dock masters are there to help you board the right water taxi. The crew has specific instructions NOT to go to other zones or

Some courses are ‘pre-set’. They will be displayed as a single symbol comprising a letter and number in black. For instance, on Friday you will probably see this:



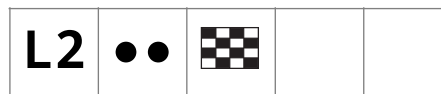
That mean to use the ‘pre-set’ course R0 and finish at the Heineken Finish. The pre-set courses are shown on the course chart Appendix A.

Occasionally, a pre-set course will be too short for the conditions, or otherwise needs a little change to make it better. The Race Committee can do that by showing a mark or marks before or after a pre-set course symbol, like this:



That means “sail pre-set course E1, and when you have rounded all the marks of E1, round mark 26 to starboard, pass through the Heineken Gate and finish on the Heineken Finish line”.

On laid mark courses, there can also be an additional mark and possibly an ‘Alternate Finish’, so this:



means “sail course L2 (which is windward to port, leeward gate, windward to port), and then the leeward gate before finishing on an ‘Alternate Finish’ which will be announced on VHF with your course.

outside the anchor zones. So when you board the wrong dinghy you will be taken back to shore, delaying transport for your fellow participants.

Please note - No private boats/dinghies are allowed on the dock where the water taxi operates.

Water taxi Schedule

Water taxi service between Sint Maarten Yacht Club and Simpson Bay and within the lagoon every day from Thursday to Sunday from 0700 to 1000 and from 1400 to 0100.

Shuttle between Sint Maarten Yacht Club and Port de Plaisance

An additional shuttle will run on Thursday from 1600 to 0100 to and from Port de Plaisance for prize giving and the Welcome Party (see map below for pick up and drop off zone at Port de Plaisance.)

How to indicate you want to go to shore:

In your Goody Bag you will find a Sol flag and a Fiji Water glow stick. While there is daylight you should hoist the Sol flag on your backstay or starboard shrouds. In the nighttime activate the Fiji Water glow stick and hang it on your starboard lifelines. This indicates that you need to be picked up. When you are picked-up please be sure to remove the flag or glow stick.

Bareboat fleet: Help us find your boat!

Anchor in the pre-designated zone shown on the map above. Simpson Bay is divided into zones. Each charter company has a pre-designated zone where boats are requested to anchor. Always (especially at night) remember your boat name, charter company, bow number, anchor zone and identify a big local or racing boat next to yours. Remember; almost every boat is white and at night

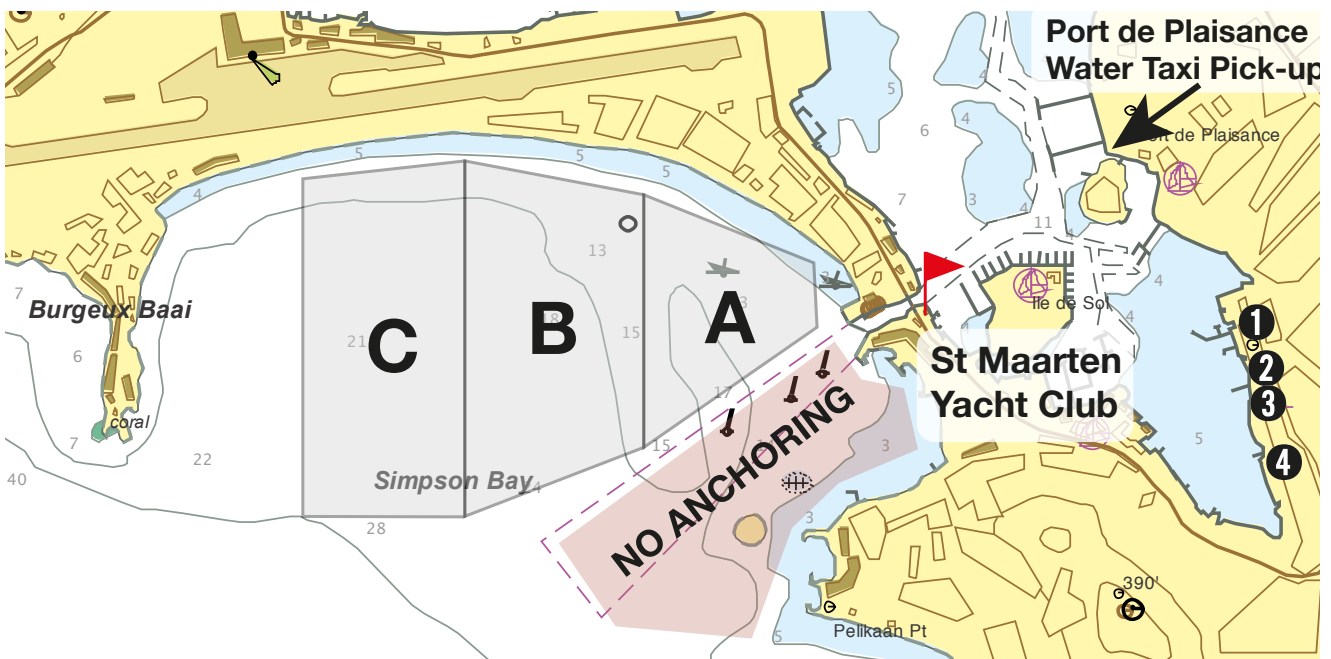
they look very similar!

Anchoring Zones

Company	Zone
Moorings	A
Windward Adventures	A
Sunsail	B
ATP & Kras	B
Non-Bareboats	C

ANCHOR ZONES IN SIMPSON BAY

IMPORTANT: On the map of the anchorages there are restricted areas where anchoring is prohibited. These areas are operating space for ferries and other commercial boats. The Water Taxi will not serve boats anchored in these restricted areas and coastguard will patrol these areas and could fine you when anchored wrongly. *Do not anchor close to any mooring.*



MARINE / CHANDLERY / REPAIR SERVICES DURING REGATTA

Budget Marine offers a free Water taxi service starting Tuesday 1 March every half hour between 0800 – 1700, from the Sint Maarten Yacht Club to the Budget Marine Shop and back. Several shops on the island will provide emergency repair services during the regatta. Their location is shown on the above map.

① St. Maarten Sails: repair service: contact them at +1 (721) 544 5231.

- ② FKG Marine Rigging: emergency rigging and repair service during the regatta after the races: contact them on VHF 71 or on the phone at +1 (721) 586 2656 / +1 (721) 544 4733.
- ③ The Tropical Sail Loft: overnight repair service: contact them at +1 (721) 544 5472.
- ④ Budget Marine: Chandlery and GILL stockist. +1 (721) 544-3134.

TAXI AND BUS

During the event there are many taxis and buses to take you to and from the event venues. To make sure

you use the safest and best service we recommend you to use the licensed taxis or buses.

Dutch St. Maarten Taxi Association:

- Hotline: 9247
- Tel: +1 (721) 543 7814
- Tel: +1 (721) 543-7815.
- Web: www.taxistmaarten.com

French Side Taxi stands Marigot

- Phone: +590 590 87 56 54

There will be a taxi stand at every party location.

REGATTA GEAR

Shipwreck Shops are the official supplier of the 2016 St. Maarten Heineken Regatta Gear - visit them at any of their stores island wide, at the Shipwreck tents at any of the Regatta parties or at registration at the Sint Maarten Yacht Club. For more information, please contact: Phone: +1 (721) 542 5358

GILL is the official supplier of the technical gear for the 2016 St. Maarten Heineken Regatta. The high quality technical line will be available at all party locations (except the Boardwalk in Philipsburg), registration or at Budget Marine in Cole Bay. For more information please contact: Phone: +1 (721) 544 3134.

SEA RESCUE, FIRST AID AND COASTGUARD

The St. Maarten Sea Rescue, Coast Guard, and French SNSM will be on standby throughout the regatta. Their boats are Rescue One, Rescue Two, and a power rib.

They stand by on

- VHF Channels 06, 16 and 73.

They can also be called on the following phone numbers:

- Cellular +590 690 41 17 07 (SNSM-Francois HUC)
- +1 (721) 581 9913 (Coast Guard - Puma)
- Sea Rescue - 913 (emergency number)

In case of an emergency please identify the position of the emergency with a GPS position or reference to the buoys, which are indicated on the regatta brochure.

The St. Maarten Sea Rescue has contact with the EMS Ambulance service and the SNSM with the French side ambulance service.

- Dutch Side hospital +1 (721) 543 1111
- French Side hospital +590 590 29 57 57

The Coast Guard is concerned with safety and will actively pursue the following issues:-

- Dinghy Capacity: The Coast Guard will prosecute dinghies where the number of persons on board exceeds the manufacturers' specification. If your dinghy has a specification for four persons there should only be up to four persons on board. The number of persons is usually on the plate of the transom.
- Speed: Whilst there is no defined speed limit, your speed should be such to be safe and not cause the threat of danger or disturbance from a wake due to your speed. In the bridge channel and in locations where visibility is restricted that is a low speed that is certainly no more than 5 mph.
- Lights: When driving your dinghy at night you must have a proper functioning flashlight with you as required by the Island Legislation.

LA RÉSERVE NATURELLE SAINT-MARTIN

Blessed with three large ecosystems, the Natural Reserve of Saint Martin houses a rich variety of fauna. Numerous species enjoy this protected environment, notably hawksbill sea turtles which can be seen in the transparent waters around Tintamarre. With an eye toward environmental protection, the Marine Park has a set of strict regulations established by governmental decree. It is forbidden to:

- disturb, bother, or harm animals or their eggs, their nests or nesting places, or their young; or to remove them from the Marine Park;
- pick, destroy, or introduce plants, or to remove them from the Marine Park;

- hunt, fish with a line, net or trap, to fish with a harpoon or gun, or to remove any animals dead or alive;
- abandon or jettison any product that is harmful to the quality of the air, the water, the earth, or the site, or to the overall flora and fauna;
- disturb the peace with loud noise;
- camp in a tent, in a vehicle, or any other form of shelter;
- damage the natural environment by setting fires or making inscriptions;
- use water skis or jet skis;
- collect minerals, fossils, or archeological vestiges;
- fly over the marine park at an attitude of less than 300 meters.

Please respect the flora and fauna. Please remember to pick up your trash. Do not encourage the illegal

commerce of protected natural species (shells, cactus, turtles, etc.)

ST. MAARTEN NATURE FOUNDATION

The Foundation for the Management and Conservation of Nature on Sint Maarten (short: Nature Foundation St. Maarten) was established in January 1997 with the objective to enhance the environment through proper management, education awareness and protection.

A Marine Park was established in June 1997 with funding from the Dutch World Wildlife Fund (WWF) that seeks to protect areas of important natural habitat unique to St. Maarten. The St. Maarten Nature Foundation is the management authority of the Man of War Shoal Marine Park, the island's first national park and all St. Maarten dive sites. Tourist activities are concentrated on the south and eastern side of the island where the Marine Park is located, where the dive sites Molly Beday, Pelican Rock, Hen and Chicks, and Cow and Calf as well as the Proselyte Reef Complex are located. These areas embody some of the last pristine marine locations on the island, with excellent diving. This area also constitutes an important breeding ground for marine birds, fish, sea turtles, queen conch and other marine life. The Nature Foundation manages and installs all dive moorings on the Dutch side of the island. The Nature Foundation also actively manages the St. Maarten Sea Turtle Program. Every year during turtle nesting season (March to November) data is recorded on the three species of turtles that nest on our beaches; the Leatherback, Hawksbill and Green sea turtles. Patrols are carried out daily to monitor for laying turtles, turtle tracks, and any activity which could prove detrimental to nesting activities. The Foundation also monitors sea turtle nest development and hatchery success and engages the public in outreach and education programs. The marine environment of St Maarten includes more than 20km² of globally threatened coral reef as well as seagrass and mangrove ecosystems. St Maarten's marine environment is a home and migratory stop over or breeding site for 3 IUCN Red List Species, 10 CITES Appendix I species and 89 Appendix II species. The beaches and waters attract approximately 2 million visitors a year, creating employment for 85% of the islands population. Tourism and the marine industry contribute \$500

million and \$30 million to the economy respectively and both depend on the health of St Maarten's marine resources.

The Nature Foundation is a non-governmental/non-profit organisation consisting of a Manager, Chief Marine Park Ranger, Marine Park Ranger, and Office Manager. The staff is supported by a Board consisting of five members.

The Nature Foundation is also working on an educational program to stimulate marine and environmental awareness in the schools.

CLEAN REGATTA

After the success of last year, the St. Maarten Heineken Regatta is once again cooperating with the Sailors for the Sea in order to organise a Clean Regatta.

The organisation of the St. Maarten Heineken Regatta is well aware of the importance of protecting the sea, lagoon and shores. We would like to create environmental awareness to all of our participants, here are some suggestions:-

Overboard Discharge: Sewage discharge from marine heads can cause significant damage to surrounding waters. Read more to understand these problems and find a list of pump-out stations.

Oils and Fuel Spills: Over half the ocean's waste oil comes from land-based sources and from unregulated recreational boating. With a little pre-caution, recreational boaters can take small steps to mitigate the inherent risk of spilling oil or fuel while operating their vessel.

Non-Toxic Cleaning Products: Deciding which cleaning product is ideal for your boat can be daunting, but with the proper knowledge you can choose the cleaning product that is best for your boat and the environment.

Invasive Species Prevention: Invasive species are non-native plants or animals that adversely affect the habitats they enter. Boaters can take simple precautions to ensure they do not help these species spread.

Grey Water Reduction: Did you know? Water washing down the sink of your boat should not be discharged overboard? Learn more about the problems gray water can create.

Recycling: Separate your cans, glass and plastic bottles from the rest and put them in the designated bins.

SINT MAARTEN YACHT CLUB

The Sint Maarten Yacht Club has its own Clubhouse. The property is located on Simpson Bay Lagoon, just before the bridge as you are going towards the airport. Our Clubhouse Restaurant, SMYC Bar and Restaurant is open during the Regatta from 0700. until at least midnight serving breakfast, lunch and dinner and will be a great viewing location. You can also exchange a burgee from your Yacht Club with one of the Sint Maarten Yacht Club.

SERIOUS FUN BRIDGE SHOW

Again this year the St. Maarten Heineken Regatta will be making a show out of the bridge openings, turning an otherwise boring process into fun! Brought to you by The Yacht Shop, representatives will be at the in-bound bridge openings after racing scoring boats on the effort they make as they come through the bridge. You can spot the judging area by their sign which will be on the deck of the Sint Maarten Yacht Club. They will be judging on originality, effort, and crowd reaction. The judges will score the boats with cards from 1 to 5 which they will hold up for you to see. There are some great prizes. The winners will be crowned at the prize giving on Sunday!

HEINEKEN FUN PRIZE

For all those sailors and non-sailors who come to St. Maarten not only to sail but also to party, we have a serious challenge. The Heineken Fun Prize is the only prize not limited to the Sailing Crowd. Any team actively taking part in the Fun on-shore events can win this prize. Do you and your friends want to compete to become the best on-shore performers and thus achieve the honorable status of Heineken Fun Prize Winner? Then you and your teammates have to meet the following criteria to be nominated for this unique Heineken prize.

The Criteria:

- The whole crew should party every Regatta night (starting on Thursday March 3 through Sunday March 6) until the music stops. When we say party, we mean PARTY!
- The crew should be recognisable as a team. Same shirt, hat or other item making clear that you are in this together.
- The crew should drink Heineken and Heineken only.

SERIOUS, SAFE, FUN!

The St. Maarten Heineken Regatta is known for the fabulous combination between world class sailing and fun filled parties, what we like to call 'Serious Fun'. It takes a lot of organising to put this world-renowned event together and safety is a high priority. We work closely with all authorities to ensure your safety on the water and on shore. We have Sea Rescue and Coast Guard on the water before, during and after the races. Also, we have police patrolling the waters, as well as on shore...all to ensure the safety of our participants and visitors.

It gives another meaning to the phrase 'Serious Fun'; we would like to ask you to remain conscious of your safety during your stay here on St. Maarten. Have Fun but enjoy responsibly. Please don't drink and drive; make sure you lock your boat when there is no one on board; keep an eye on your dinghy, luggage, other valuables and of course each other.

DEBRIEF

On Monday 7th March from 10 - 12am at the St Maarten Yacht Club Bar, your Race Committee will be having their de-brief. You are welcome to stop by to say "hello" / offer constructive criticism of the event / buy them a drink / berate them. Please remember they are not responsible for either the weather or the amount of Heinekens you drank at prize-giving!

EVENT PROGRAM

Wednesday March 2nd	Team Brunel on the dock at the Sint Maarten Yacht Club. Get a tour on board and watch their movie 'When Boys Became Men'	starts at 1730
Thursday March 3rd	Welcome party at Port de Plaisance	starts at 1700
	Press Conference at Port de Plaisance	1830
	Prize-giving ceremony for the GILL Commodore's Cup	1930
Friday March 4th	Party at the Boardwalk, Philipsburg including a new introduced Boardwalk Market! <i>Shuttle buses will run continuously from Palapa Marina to the Boardwalk, stopping also at Sint Maarten Yacht Club and Simpson Bay Yacht Club to the Courthouse in town and back again. This will be from 1800 until 0100.</i>	starts at 1700
Saturday March 5th	Party at Kim Sha Beach in Simpson Bay	starts at 1700
Sunday March 6th	Final party at Kim Sha Beach in Simpson Bay	starts at 1200
	Prize-giving ceremony at Kim Sha Beach <i>After the prize giving the party continues!</i>	1800 - 2000
Monday March 7th	Après Sail party at Marina Royale in Marigot, French St. Martin	starts at 1800

The prices for beverages are the same at every location and can be paid with US Dollars, NAF and Euros.

BRIDGE OPENING TIMES

Simpson Bay Bridge		
	Out-bound	In-bound
Thursday 3rd	0800 0830 1030 1600	0930 1130 1500 1700
Friday 4th	0800 0830 1030 1600	0930 1130 1500 1700 1800
Saturday 5th	0800 0830 1030 1600	0930 1130 1500 1700
Sunday 6th	0800 0830 1030 1600	0930 1130 1330 1500 1700

Causeway	
In & Outbound traffic	0815
In & Outbound traffic	1000
In & Outbound traffic	1145
In & Outbound traffic	1530
In & Outbound traffic	1715