



# 12TH ANNUAL sol ST MAARTEN OPTIMIST CHAMPIONSHIP 2016



Organised by the Sint Maarten Yacht Club (SMYC)

## Sailing Instructions

incorporating the SMYC Standard Clauses for Sailing Instructions - Small Boat

### 1. Contact:

Regatta website	<a href="http://regattaguru.com/smyc/">http://regattaguru.com/smyc/</a>
Organising Authority	Sint Maarten Yacht Club (SMYC)
Email: <a href="mailto:smyccoach@gmail.com">smyccoach@gmail.com</a> , Tel: +1 721 544 2075, +1 721 554 5232	

### 2. Schedule of events:

Date	Time	Where	What
On each team's arrival in Sint Maarten			
		SMYC	Registration
Sat 12 November	0730	SMYC	Breakfast - Sailing School Porch
Sat 12 November	See below		Racing
Sun 13 November	0730	SMYC	Breakfast - Sailing School Porch
Sun 13 November	See below		Racing
Sun 13 November	1300	SMYC	Prize-giving

### 3. Communications: verbal.

### 4. Official Notice Board:

Official notices will be posted on <http://regattaguru.com/smyc/> as well as at the SMYC.

### 5. Schedule of races, start area:

Date	Approximate Start area	1st Warning	Last warning	Time limit	Races	Notes
Sat 12	Simpson Bay	0930	1200	40	4	
Sat 12	Simpson Bay	1330	1600	40	4	
Sun 13	Simpson Bay	0930	1230	40	4	

### 6. Classes, Class flags, Order of starts:

Classes/Fleets	Rating System	Class Flag	Start order	Additional information
Optimist Blue	One-design	Blue flag	1	All Optimists may start together, but will be scored in fleets.
Optimist Orange	One-design	Orange flag	2	

### 7. Other rules:

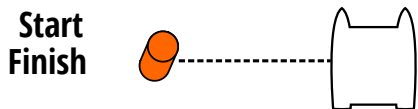
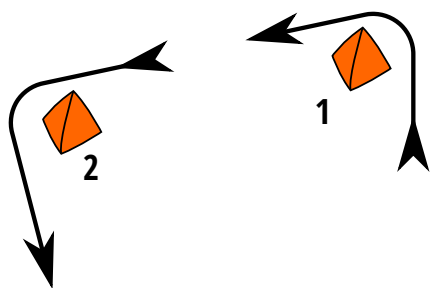
- 7.1. These Sailing Instructions includes the *SMYC Standard Clauses for Sailing Instructions - Small Boats*.
- 7.2. Turns penalty: 2 turn.
- 7.3. Discards: One discard if five or more races are completed. Two discards if 10 or more races are completed.
- 7.4. Standard Clause 11.2 is changed: The start line will be between a staff displaying a Sol flag on the committee boat and a nearby orange cylindrical mark.
- 7.5. Standard Clause 13 is changed: The finish line will be between a staff displaying a Sol flag on the committee boat and a nearby small orange fender.
- 7.6. A White flag displayed over a class flag with two sounds means that any boat in that class still racing will be scored in the position that they currently hold without completing the course or finishing. They can sail directly back to the start area to prepare for the next start. This changes Rule 28 and Appendix A4.
- 7.7. Prizes: 1st, 2nd, and 3rd in each fleet. Additional prizes may be awarded at the discretion of the Race Committee.



# Attachment A - Courses Blue Fleet



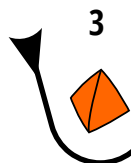
### Course 1



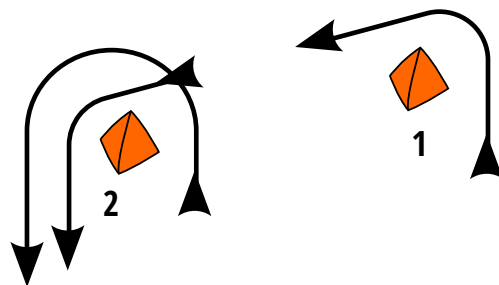
4



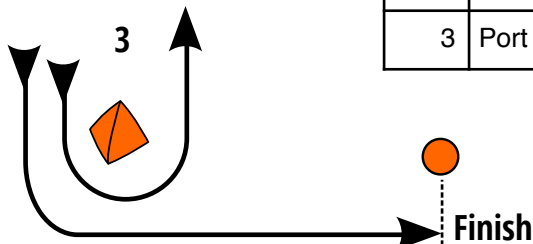
Mark	Round to:
1	Port
2	Port
3	Port



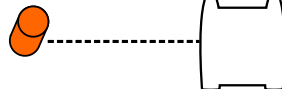
### Course 2



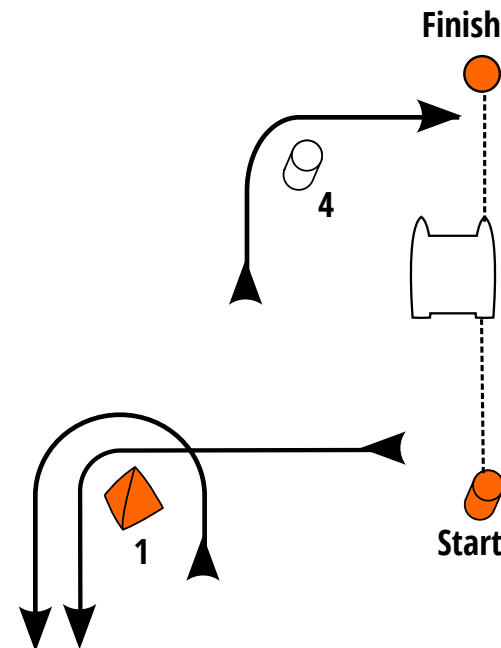
Mark	Round to:
1	Port
2	Port
3	Port
2	Port
3	Port



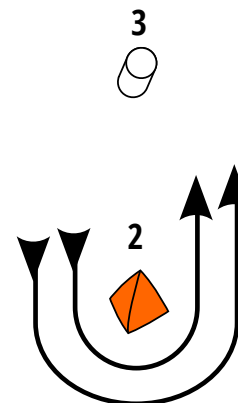
Start



### Course 3



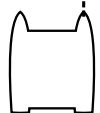
Mark	Round to:
1	Port
2	Port
1	Port
2	Port
4	Starboard



Finish



4



Start





# Sint Maarten Yacht Club

## STANDARD CLAUSES for SAILING INSTRUCTIONS - SMALL BOAT

When this document is included in a Sailing Instructions (SI), the two documents combined form the 'Sailing Instructions' as defined in RRS Appendix J2. The SI may change any part of this document by stating the Standard Clause (SC) changed and the change.



### 1 RULES

- 1.1 The regatta will be governed by the rules as defined in The Racing Rules of Sailing.
- 1.2 No national authority prescriptions will apply.
- 1.3 LSR Boat Handling Rules will apply to boats in the LSR Class.
- 1.4 Any additional rule changes are listed in the SI.
- 1.5 If there is a conflict between languages the English text will take precedence.

### 2 ENTRY

- 2.1 Entry is open to any boat in a class listed in the SI subject to any restrictions listed there.
- 2.2 Entry is subject to the completion of an entry form available from the Race Office and payment of any fee prior to racing on a Race Day.

### 3 ADDITIONAL IDENTIFICATION

- 3.1 If required by the Notice of Race, boats shall display identification while racing. The organising authority will supply such identification and instructions for their use.

### 4 NOTICES TO COMPETITORS

Notices to competitors will be posted on the official Notice Board located at The Sint Maarten Yacht Club and on the regatta website.

### 5 CHANGES TO SAILING INSTRUCTIONS

- 5.1 Any change to these sailing instructions will be posted not less than 1 hour before the warning signal of the first race in which it will take effect, except that any change to the schedule of races will be posted by 2000 on the day before it will take effect.
- 5.2 Changes to the SI of this Sailing Instructions may be made verbally by the Race Committee on the water by hailing.

### 6 SCHEDULE OF RACES

The Schedule of Races is given in the SI.

### 7 CLASSES, CLASS FLAGS, AND STARTING ORDER

- 7.1 Classes, Class flags, and the scheduled starting order for the first race of each day are listed in the SI. Subsequent races on each day may start in a different order.
- 7.2 A class flag will be accompanied by a fleet flag when necessary for identification. The fleet flags are flags of the colours stated the SI.

### 8 RACING AREAS

The location of the start will be posted on the Official Notice Board or notified verbally at any Briefing described in the SI.

### 9 THE COURSES

- 9.1 The diagrams in Attachment A show the courses, including the course signals, approximate angles between legs, the order in which marks are to be passed, and the side on which each mark is to be left.
- 9.2 The course to be sailed will be signalled verbally by the Race Committee and may also be displayed on a course board.

### 10 MARKS

10.1 Unless specified in the SI, all marks will be:

- (a) orange ball-shaped fenders,
- (b) white inflated marks bearing a 'Budget Marine' logo, or
- (c) red inflated marks bearing a 'Budget Marine' logo.

10.2 Unless specified in the SI, the starting and finishing marks will be orange ball-shaped fenders.

### 11 THE START

11.1 Races will be started according to the Modified 3-minute Starting System detailed in Attachment B. This changes RRS 26.

11.2 Unless specified in Attachment A the starting line will be between a staff displaying an orange flag on the committee boat and a nearby orange ball-shaped fender.

11.3 Boats whose warning signal has not been made shall avoid the starting area during the starting sequence for other races.

11.4 If invoked in the SI a starting time limit will apply: a boat starting later than the specified time after her starting signal will be scored Did Not Start without a hearing. This changes rules A4 and A5.

### 12 CHANGE OF THE NEXT LEG OF THE COURSE

12.1 To maintain a course configuration or change course length marks may be moved as necessary, but no mark shall be moved when any boat is sailing on the leg that it ends. A leg of the course may not be deleted. This changes RRS 32.2 and 33.

12.2 The Race Committee will not signal a change of course unless the change is greater than 30° in direction or 25% in length. This changes RRS 33.

## 13 THE FINISH

Unless specified in Attachment A the finishing line will be between a staff displaying a blue flag on the committee boat and a nearby orange ball-shaped fender.

## 14 PENALTY SYSTEM

14.1 If invoked in the SI RRS 44.1 is changed so that the Two-Turns Penalty is replaced by the One-Turn Penalty.

14.2 If invoked in the SI RRS 44.3 Scoring Penalty will apply.

14.3 RRS 44.1 is modified to allow a boat to take an Arbitration Penalty for a breach of a rule of Part 2 after the incident but prior to the protest hearing by acknowledging the breach before arbitration or by accepting the opinion of the arbitrator. This Arbitration Penalty shall be 30% of the number of boats entered (rounding 0.5 upward) added to her finish position. However she shall not be scored worse than "Did not finish".

## 15 TIME LIMIT

If invoked in the SI, a boat failing to finish within the specified time after the first boat in their class sails the course and finishes will be scored Did Not Finish without a hearing. This changes RRS 35, A4 and A5.

## 16 PROTESTS AND REQUESTS FOR REDRESS

16.1 For each class, the protest time limit is 45 minutes after the last boat has finished the last race of the day or after instruction 15 has been applied to that race.

16.2 Breaches of Standard Clauses 1.3, 3, 11.3, 20, or 21 will not be grounds for a protest by a boat. This changes RRS 60.1(a).

16.3 Except for breaches of RRS Part 2, the protest committee may apply any penalty that they deem equitable. This changes RRS 64.1.

16.4 The scoring abbreviation for a discretionary penalty imposed under Standard Clauses 14.3 or 16.3 will be 'DPI'.

## 17 ARBITRATION

17.1 For protests involving an alleged breach of a rule of Part 2, a short arbitration hearing will be held prior to a protest hearing. This changes Part 5, Section B of the RRS.

17.2 After a written protest is delivered to the Protest Desk, one representative from each boat will meet with the arbitrator unless the protestor requests that the protest be withdrawn. No witnesses will be allowed. Protests not resolved by arbitration will be forwarded to the Jury.

17.3 A boat that accepts the arbitrators opinion that she broke a rule of Part 2 shall receive a penalty score of 30% as detailed in Standard Clauses 14.3.

17.4 The acceptance of an Arbitration Penalty cannot be grounds for redress or be appealed.

## 18 SCORING

18.1 Unless specified in the SI, a boat's series score will be:

Races completed	excluded scores
fewer than 5	none
5 - 9	1
10 - 14	2
15 - 19	3
20 or more	1 for each 5 races completed

18.2 To request correction of an alleged error in posted race or series results, a boat may complete a scoring enquiry form available at the race office.

## 19 EQUIPMENT AND MEASUREMENT CHECKS

A boat or equipment may be inspected at any time for compliance with the Rules. On the water, a boat can be instructed by a race committee equipment inspector or measurer to proceed immediately to a designated area for inspection.

## 20 SUPPORT BOATS

Team leaders, coaches and other support personnel shall stay outside areas where boats are racing from the time of the preparatory signal for the first class to start until all boats have finished or retired or the race committee signals a postponement, general recall or abandonment.

## 21 Blank

## 22 PRIZES

Prizes are listed in the SI.

## 23 DISCLAIMER OF LIABILITY

Competitors participate in the regatta entirely at their own risk. See RRS 4, Decision to Race. The organising authority will not accept any liability for material damage or personal injury or death sustained in conjunction with or prior to, during, or after the regatta.

## 24 RIGHTS TO USE NAME AND LIKENESS

By participating in this event, competitors automatically grant to the organising authority and the event sponsors the right, in perpetuity, to make, use, and show, at their discretion, any photography, audio and video recordings, and other reproductions of them made at the venue or on the water from the time of their arrival at the venue, until their final departure, without compensation.